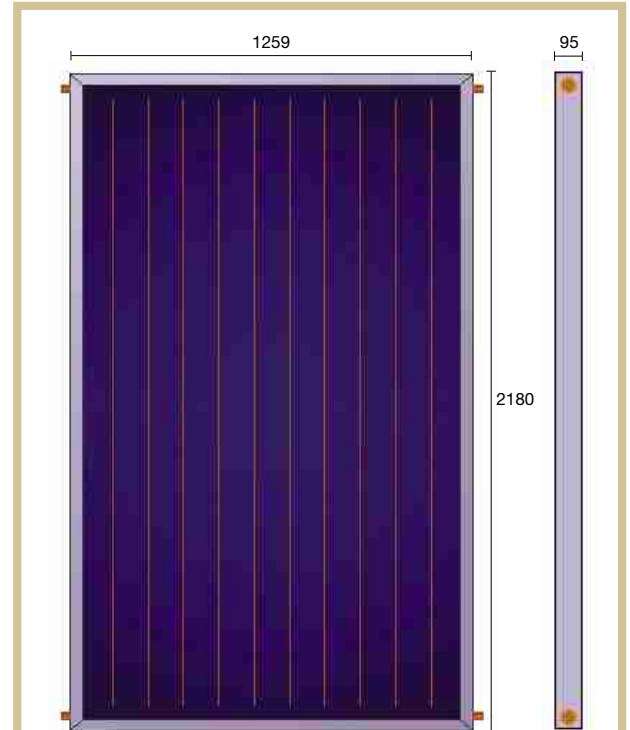


AS 2.6 M

ASTERSA AS 2.6 M collector consist of a copper absorber with selective BLUETEC treatment welded by ultrasonic to a grid collector. Absorber welding is carried out by induction. The frame is 100% extruded and high quality anodized Tempered solar glass of high resistance and low emissivity Back cover made up of thermal Polyethylene.



DIMENSIONS AND WEIGHTS

Total length	2.180 mm
Total width	1.259 mm
Total depth	95 mm
Total area	2,74 m ²
Aperture area	2,52 m ²
Absorber area	2,54 m ²
Weight empty	51 Kg
Heat transfer fluid	Water and glycol
Fluid capacity	1,70 l
Stagnation temperature	207 °C
Maximum bending pressure	1.000 Pa

PRESSURES, FLOW AND CONSTANTS

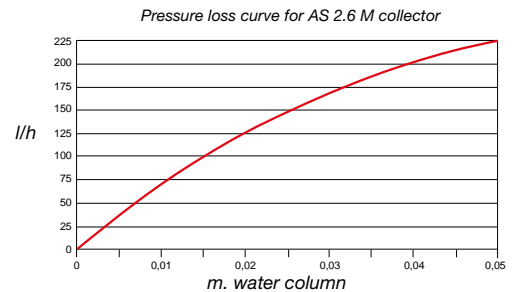
Registered pressure	14 bar
Working pressure	10 bar
Recommended flow rate	45 l/h sqm
Time constants	0:01:04 h:m:s
Effective thermal capacity	11.985 J/°K
Incidence angle modifier	0,94 (β=50°)

MANUFACTURING FEATURES

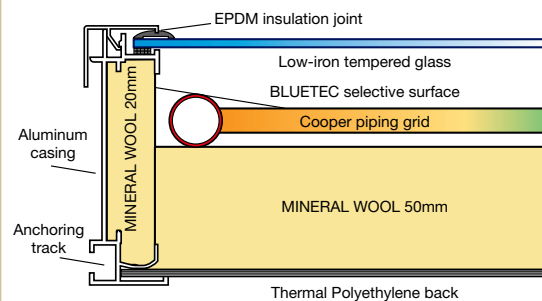
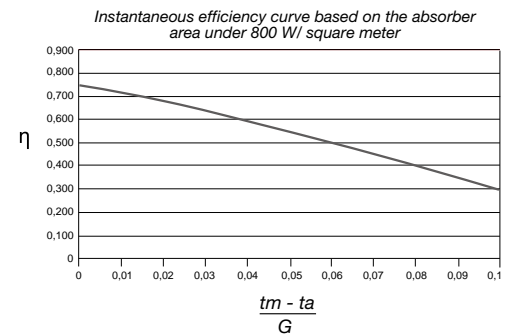
Transparent cover	3,20 mm sheet of low-iron tempered glass
Casing	1,70 mm sheet of anodized aluminium AL-6063 TS
Absorber	0,20 mm single copper sheet welded to grid by using ultrasounds
Selective coating	Selective BLUETEC
Main header	Two 22 mm units
Secondary header	Ten 8 mm units
Thermal insulation	High density mineral wool. D: 500 Kg/m ³ / C: 0,035 W/m·°C 50 mm back and 20 mm lateral
Back finish and sealing	Thermal polyethylene and silicone + EPDM rubber
Connections	4 Plain copper tubes (22 mm)

INSTANTANEOUS EFFICIENCY CURVE AND REGISTER

Optical efficiency	74,90 %
Main factor for pressure loss	3,708 W/sqm K
Secondary factor for pressure loss	0,014 W/sqm K ²
Certification standard	EN 12975-1:2000; EN 12975-1:2001; EN 12975-2:2001/AC:2002; ME-542-01
Certification number	NPS-8509
KEYMARK registering number	011-7S508 F



Pressure loss:				
Flow (l/min)	1,3	2	3	4
Pressure fall (mbar)	1	2	3	5





AS 2.6 M

INTERCONNECTION

ASTERSA solar thermal collectors are interconnected through 22 mm common joints type conex. Straight and corrugated stainless steel conex are recommended

STRAIGHT CONEX 22 H



CORRUGATED CONEX 22 H



STRUCTURES

Supporting structures for ASTERSA collectors manufactured under NB-AE 88 norm. Manufactured in AL-6063 T5 anodized aluminium with standard shapes and stainless steel screws.

They are sent totally packaged, encoded and with installation manual Available for flat roofs, sloping on-roof and sloping in-roof.

FLAT



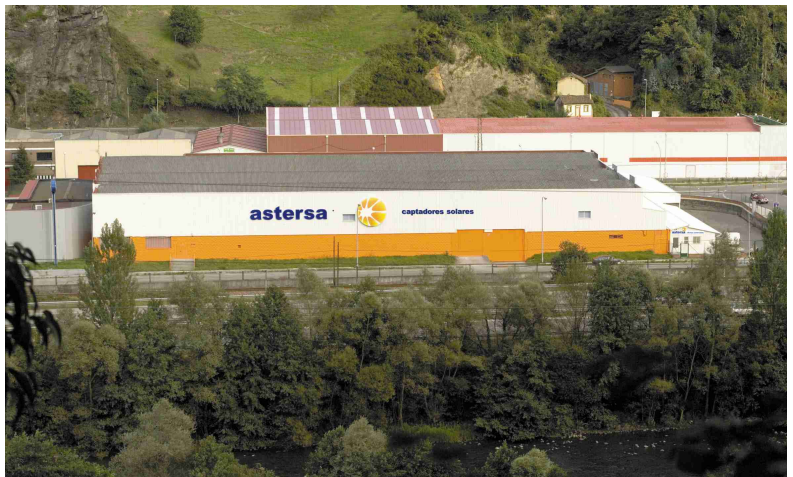
ON-ROOF



IN-ROOF



ASTERSA PRODUCTION AND MANUFACTURING



CERTIFICATIONS AND STANDARDS

